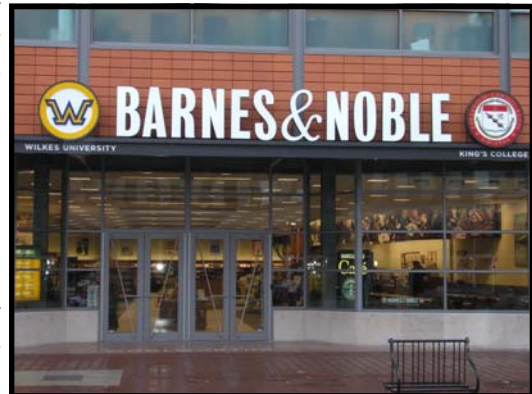

Borough of Factoryville Economic Development Profile and Strategy – September 2010.

A study for the Borough of Factoryville that combines components to develop an economic development profile by evaluating the demographic makeup, business composition, and consumer purchasing power and habits of Factoryville Borough, Pennsylvania.

NEPA Economic Development Assessment of Marcellus Shale – October 2009. An assessment of workforce and economic development opportunities implications of Marcellus Shale in northeastern Pennsylvania.

Business Asset Map—July 2006. Mapping of assets in a 10 block radius for a small city in Northeastern Pennsylvania. Included detailed evaluation of properties, recommendations , and a strategy for a targeted business development program focusing on retail, hospitality, and entertainment as well as environmental factors conducive to business growth and sustainability. Recommended ordinances were prepared.

Wilkes-Barre City Economic Development Strategy—July 2006. Strategy for a small city in Northeastern Pennsylvania that included detailed focus on strategies for improving housing stock that would encourage more people to seek downtown living; and a strategy for creating a college town atmosphere. All aspects of economic development (business attraction, retention, creation an incubation).



South Valley Regional Economic Development Strategy—October 2005. Evaluation of several communities in the Nanticoke region which have undergone declines in population, business attraction and retention, and political turmoil. Strategy provided steps become more inclusive of higher education partners in the community, and steps to improve business attraction and retention and improve quality of place.