

The **INSTITUTE** for

---

Public Policy & Economic Development



# **THE RISE OF LUZERNE COUNTY: AN EXAMINATION OF THE ORIGIN AND FUTURE EFFECTS OF RECENT POPULATION SHIFTS**

**DECEMBER 2008**

**FORMERLY KNOWN AS JOINT URBAN STUDIES CENTER (JUSC)**

The **INSTITUTE** for  

---

Public Policy & Economic Development

---

7 South Main Street, Suite 201 Wilkes-Barre, Pennsylvania 18701  
120 Wyoming Avenue, Third Floor, Scranton, PA 18503

t: 570.408.9850 f: 570.408.9854 w: [www.urbanstudies.org](http://www.urbanstudies.org)

**Staff**

**Teri Ooms**  
Executive Director

**Sherry Tracewski**  
Research and Policy Analyst

**Marla Doddo**  
Administrative and Outreach  
Coordinator

Copyright © 2008 The Institute for Public Policy & Economic Development. All Rights Reserved. No part of this publication may be copied or reproduced in any form or by any means without permission in writing from The Institute for Public Policy & Economic Development.

**The Institute for Public Policy & Economic Development**

The Institute for Public Policy & Economic Development formerly known as the Joint Urban Studies Center (JUSC) was established to provide essential research, analysis, and consultation to cities, counties, states, non-profits, institutions, and economic and workforce development providers aiming for full participation in the new economy of the 21<sup>st</sup> century. The Institute mobilizes the resources of regional institutions of higher education to engage communities in planning that is informed by research, energized by broad participation from stakeholders in the community, and validated by successful implementation. As the managing partner in The Institute, Wilkes University is joined by Keystone College, King’s College, Luzerne County Community College, Marywood University, Misericordia University, Penn State Wilkes-Barre, and the University of Scranton.

**Note**

The views expressed here do not necessarily reflect those of the educational partners, their offices, trustees or board members, or private businesses that fund The Institute for Public Policy & Economic Development or the staff of The Institute.

**Acknowledgements**

We would like to acknowledge The Institute’s Advisory Board for its time, effort and commitment to this region:

William P. Montague Founder <i>Mark IV Industries</i>	Charles Davis, Ph.D. <i>Penn State Wilkes-Barre</i>	Ann Munley, IHM, Ph.D. <i>Marywood University</i>
Tim Gilmour, Ph.D., Chairman <i>Wilkes University</i>	Jim DePolo <i>Covington Forge Ltd.</i>	Thomas J. O’Hara, C.S.C., Ph.D. <i>King’s College</i>
William B. Sordoni, Vice-Chairman <i>Sordoni Construction Company</i>	William Host, M.D. <i>Wyoming Valley Health Care Systems</i>	Scott Pilarz, S.J. <i>University of Scranton</i>
Thomas Baldino, Ph.D. Chairman Academic Council <i>Wilkes University</i>	Thomas E. Lawson <i>Borton Lawson</i>	Thomas Romanowski <i>GreenSpace Properties, LLC</i>
Richard Beasley <i>PPL Utilities</i>	David Lee <i>United Way of Wyoming Valley</i>	Eugene Roth <i>Rosenn, Jenkins, and Greenwald</i>
Edward Boehm, Ph.D. <i>Keystone College</i>	Mike Lombardo <i>Office of Governor Rendell</i>	Connie Schintz <i>Geisinger</i>
Terry Casey <i>M&amp;T Bank</i>	Michael MacDowell, Ph.D. <i>Misericordia University</i>	Susan W. Shoval <i>GUARD Insurance Group</i>
John Cefaly <i>Cushman &amp; Wakefield</i>	Melanie Maslow Lumia <i>Maslow Lumia Bartorillo Advertising</i>	Todd Vonderheid <i>Greater Wilkes-Barre Chamber of Business &amp; Industry</i>

# TABLE OF CONTENTS

<b>I. Executive Summary.....</b>	<b>1</b>
<b>II. Methodology and Limitations.....</b>	<b>4</b>
<b>III. Determining the Source .....</b>	<b>5</b>
Luzerne County Migration Data.....	5
<b>IV. Understanding the Source .....</b>	<b>9</b>
<b>VI. Breaking Down the Source .....</b>	<b>12</b>
Pennsylvania Migration Data.....	12
New York Migration Data .....	17
New Jersey Migration Data .....	20
<b>V. Conclusion.....</b>	<b>24</b>

## **I. Executive Summary**

For decades, Luzerne County's population has been declining, and the future of northeastern Pennsylvania has been unclear. In this report, The Institute for Public Policy & Economic Development (The Institute) investigates historical population declines by examining migration data. The Institute's findings reveal that there is reason to be hopeful.

Migration data, provided by the Internal Revenue Service (IRS), allowed The Institute to track the movement of persons between states and counties. Upon review of this data, The Institute found that currently there is not only more in-migration than out-migration in Luzerne County, but also that a significant percentage of Luzerne County's in-migration is coming from neighboring states.

First we looked at in-migration data by state and found that Pennsylvania (71%) had the highest amount of migration into Luzerne County followed by New York (9.9%) and New Jersey (9.5%). From there, the report provides a step-by-step process of determining a more exact source of the in-migration by examining county data.

The report then identifies in-migration versus out-migration statistics for the State from 1990 to 2006. The research shows that Pennsylvania has had a higher rate of in-migration since 2002 and the gap between in-migrants and out-migrants is increasing every year.

In breaking down the report further, the data showed in-migration from the top three states to Luzerne County increased nearly every year since 2000. The report then compares 1990 to 2006 and 2000 to 2006 data to identify any potential migration patterns.

Net migration was an important aspect of this study. Net migration tracks the flows between two specific counties by calculating the difference between in-migration and out-migration. When we examined these flows, we found that several of the counties which contributed the highest in-migration to Luzerne County also had the highest out-migration from Luzerne County. Most notably, in Pennsylvania this included Columbia, Wyoming, and Monroe. Interestingly, when New York and New Jersey net migration was examined none of the counties created a net loss.

The report allows the reader to conclude that westward migration from New York and New Jersey that moved into Pennsylvania – primarily into Monroe [and other Pocono Counties] and into the Lehigh Valley is now poised to continue its westward movement

to Luzerne and Lackawanna County. Lackawanna County is showing a similar pattern of growth.

The people movement that left New York and New Jersey for points eastward left those areas because of the high cost of housing and living. As in-migration into those areas increased on an increasing basis annually, we saw the housing prices and cost of living rise in the Pocono and Lehigh Valley. It should be noted that movement from Philadelphia and its expensive suburbs added to the Lehigh Valley growth and now that movement is continuing into our region.

This region is poised for the growth not only because of the affordable and available housing at all price points, but also because of other favorable lower cost of living expenses and our quality of place. This region is not only geographically desirable, but also has many manmade and natural features with a number of recreation, culture, and venue activities. This region's proximity to major markets like: New York City, Philadelphia, Washington, DC, and Boston add to the attractiveness of the region. The transportation corridors and local airport are also regional assets.

The migration data highlights some interesting information about the people movement. Different economic groups are moving into the region. Low-moderate income and middle-upper middle income families are moving. Sales of higher priced homes were on the increase through 2007. Valuation of all homes has been increasing as well. That is due to more demand for housing. This will continue as the population growth continues. One can also conclude that this is why this region's housing decline is not as severe as the rest of the nation.

Many of the middle-upper middle income individuals are maintaining employment outside the region as wages and opportunities are not as strong here. This means that we lose a portion of our population to Lehigh Valley, Philadelphia, New York, and New Jersey daily. With that goes some sales leakage as money is spent in-route and at their destination. Assessing the skills of this population segment and finding ways to recruit companies and/or create business start ups to employ them is a win- win situation.

The low-moderate income group is working locally. They have been working in retail, service, and the distribution industry. Some people are renting and others are joining with family members to purchase both single and multi-family housing.

Prior to the 2008 economic recession, this region's unemployment rate was declining and in the third and fourth quarter of 2007, employers had difficulty finding employees. This drove wages up slightly in the retail, service, and distribution industries for that time period which was positive for these new in-migrants.

The following state/counties have had the largest impact of in-migration on Luzerne County:

- Pennsylvania's Lackawanna, Columbia, Schuylkill, Monroe and Carbon Counties
- New York's Kings, Queens and New York Counties
- New Jersey's Passaic, Hudson and Essex Counties

What we should take away from this report is two fold. First, Lackawanna and Luzerne Counties are again following a similar path in terms of new population and therefore will experience similar opportunities and challenges as a result. Hence, working collaboratively to enhance opportunities while mitigating challenges is the best solution.

Second, this is the first time since the 1950's this region is experiencing population growth. Given that retrenchment has been the norm and there has been limited or no future planning, local government, non-profits, institutions, economic development and workforce development providers need to work together and prepare a growth plan for the region.

A number of regions have planned for growth successfully. We can capitalize on their accomplishments and learn from their mistakes. It must be clear that collaboration, cooperation, and innovative thinking will allow this region to capitalize on all the wonderful opportunities population growth can bring. This requires a thoughtful, yet open minded process to move forward.

## II. Methodology and Limitations

This report uses IRS County-to-County Migration Flow Data. This includes records from domestic tax forms 1040, 1040A and 1040EZ, as well as from foreign tax forms 1040NR, 1040PR, 1040VI and 1040SS. The County-to-County Migration Flow Data is updated annually and is based on annual changes in the addresses of the population of returns from the IRS Individual Master File System.<sup>1</sup>

County-to-County Migration Flow Data shows migration patterns by county, from place to place, based on annual changes in the addresses entered on taxpayers' individual income tax returns. The data is compiled through a joint effort of the IRS and the U.S. Census Bureau. Counts for personal exemptions represent the actual number of individuals [taxpayer(s) and dependents] reported on the tax return. These numbers may differ from year to year due to births, deaths, marriages, and dependents no longer considered exemptions. The number of exemptions does not take into account any special provision for blindness or those age of 65 or older; these factors are accounted for in tax return's tax computation portion, but are not included in file data. County-to-county flow is considered 'significant' if it contains at least ten returns, or if the flow is at least 0.5 percent of all county migrant exemptions.

Influential counties are determined by the number of migrants moving into Luzerne County. The Institute also uses net migration to further examine Luzerne County's population shifts. Net migration is determined by the number of out-migrants subtracted by the number of in-migrants. Information is compiled by state, and is further broken down by county. The data is then separated into two categories: in-migration and out-migration. In-migration data provides the total number of new returns filed for a particular county, along with where the residents came from. Out-migration data provides the total number of persons leaving a particular county, along with their new destination.

County-to-county migration data may be the largest dataset that tracks movement of both households and people from county to county, including family incomes. Because this data is obtained from income tax records, they are inclusive and reliable, although the source and design of this dataset have some limitations. As mentioned previously, those who are not required to file U.S. federal income tax returns are not included in the data, which, therefore, under-represents the poor. Also not included is the small percentage of tax returns filed after late September of the filing year. Because the IRS grants an extension to most taxpayers who file this late, and because most taxpayers who request an extension are more likely to file high-income tax returns, the migration data may also under-represent the very wealthy.

---

<sup>1</sup> SOI Tax Stats - County-to-County Migration Data.  
<http://www.irs.gov/taxstats/indtaxstats/article/0,,id=96816,00.html>

### III. Determining the Source

#### Luzerne County Migration Data

Total migration includes data from every state included in IRS migration data; however it is important to note that the IRS does not report data for counties with fewer than ten filings.

From 1990 to 2006, there occurred in-migration to Luzerne County from over 23 states. Such patterns resulted in in-migration figures exceeding out-migration figures for the first time since the early 1990's. Below is a chart depicting the source of Luzerne County's in-migration from 1990 through 2006.

Luzerne County In-Migration: 1990 to 2006			
Rank	Location	Total	%
1	Pennsylvania	54,185	71.0%
2	New York	7,523	9.9%
3	New Jersey	7,282	9.5%
4	Florida	1,583	2.1%
5	Foreign	1,278	1.7%
6	California	717	0.9%
7	Maryland	676	0.9%
8	Connecticut	517	0.7%
9	Virginia	471	0.6%
10	Massachusetts	372	0.5%
11	Arizona	358	0.5%
12	Delaware	343	0.4%
13	North Carolina	246	0.3%
14	Nevada	222	0.3%
15	Illinois	174	0.2%
16	Texas	98	0.1%
17	Hawaii	97	0.1%
18	Washington, DC	43	0.1%
19	Ohio	36	0.0%
20	South Carolina	33	0.0%
21	Michigan	22	0.0%
22	Rhode Island	19	0.0%
23	Washington	16	0.0%

Since 1990, Luzerne County has experienced in-migration from various locations, although counties within Pennsylvania, New York, and New Jersey contributed to more than 90 percent of its entire in-migration.

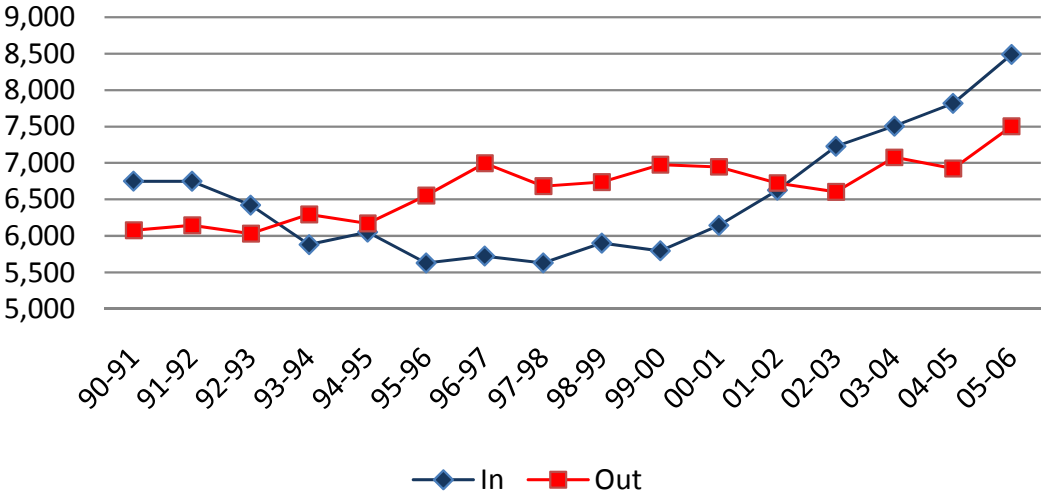
Pennsylvania and its counties provided to Luzerne County the largest number of in-migrants (54,185 or 71 percent). In examining the table below, it is evident that in-migrants to Luzerne County are largely from surrounding counties. The five largest in-migration figures from Pennsylvania to Luzerne County occurred over the past five years, with the largest in-migration (4,051 people) occurring from 2005 to 2006. Specific county origins of these migration patterns are addressed in the next section.

The table below shows Luzerne County's out-migration patterns since 1990. Patterns show that nearly three-quarters (55,428 or 73.4 percent) of those who leave the county move to other places within Pennsylvania. Interestingly, Florida ranks second for out-migration from Luzerne County, followed by New Jersey and New York.

Luzerne County Out-Migration: 1990 to 2006			
Rank	Location	Total	%
1	Pennsylvania	55,428	73.4%
2	Florida	4,483	5.9%
3	New Jersey	3,406	4.5%
4	New York	2,819	3.7%
5	Foreign	1,852	2.5%
6	Maryland	1,507	2.0%
7	Virginia	942	1.2%
8	Arizona	836	1.1%
9	California	769	1.0%
10	North Carolina	660	0.9%
11	Delaware	597	0.8%
12	Nevada	456	0.6%
13	Massachussetts	415	0.5%
14	Connecticut	256	0.3%
15	Texas	237	0.3%
16	South Carolina	236	0.3%
17	Illinois	206	0.3%
18	Washtonton, DC	169	0.2%
19	Ohio	103	0.1%
20	Colorado	48	0.1%
21	Hawaii	48	0.1%
22	Vermont	16	0.0%
23	Rhode Island	11	0.0%

The chart below helps identify Luzerne County's growing in vs. out migration from 1990 to 2006. Following the flow, there are two specific time periods when Luzerne County's in-migration was higher than its out-migration – 1991 to 1993 and 2003 to 2006.

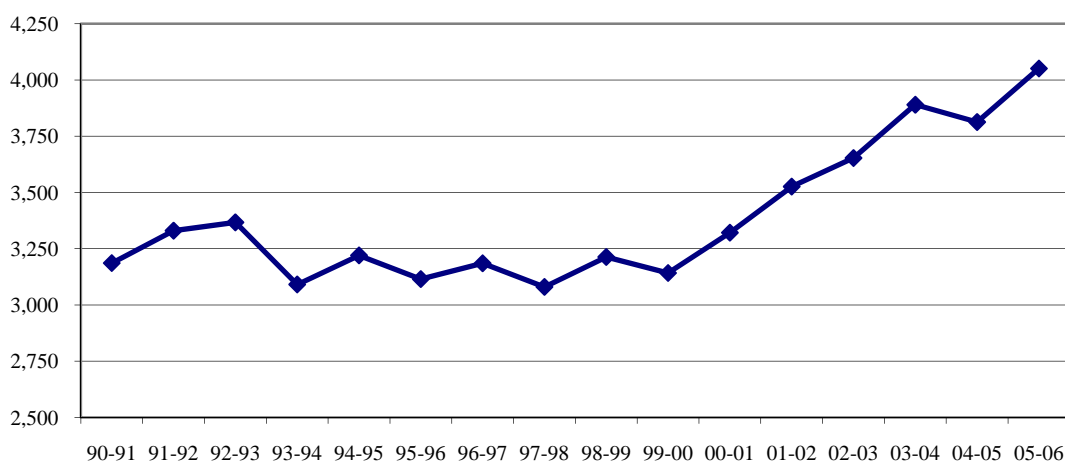
Luzerne County: In-Migration vs. Out Migration



## IV. Understanding the Source

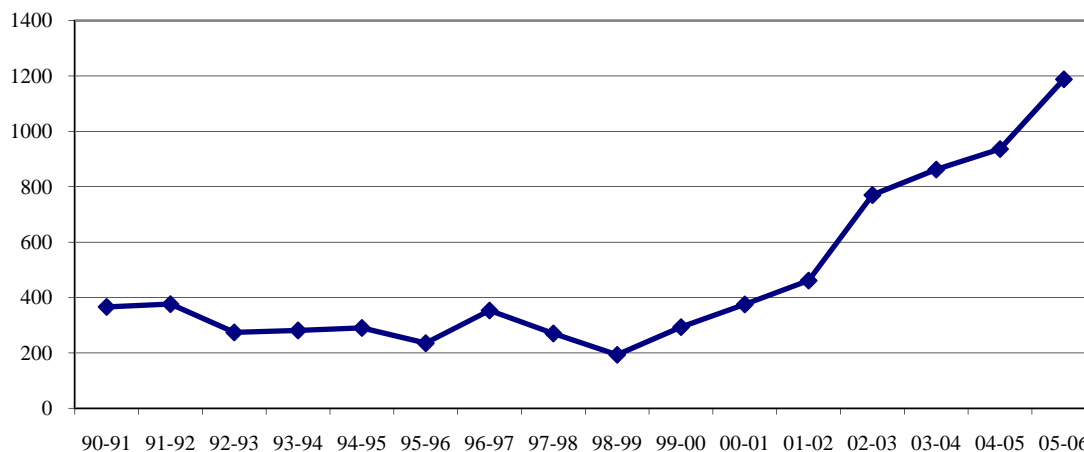
Pennsylvania counties account for 55 percent of Luzerne County’s in-migration. The chart below shows Luzerne County in-migration from 1990 to 2006. Beginning in 2000, there began a steady jump in Luzerne County’s in-migration with a decline occurring only between 2004 and 2005. From 1990 to 2006, Luzerne County shows a nearly 1,000-person in-migration increase.

Luzerne County In-Migration: Pennsylvania Counties



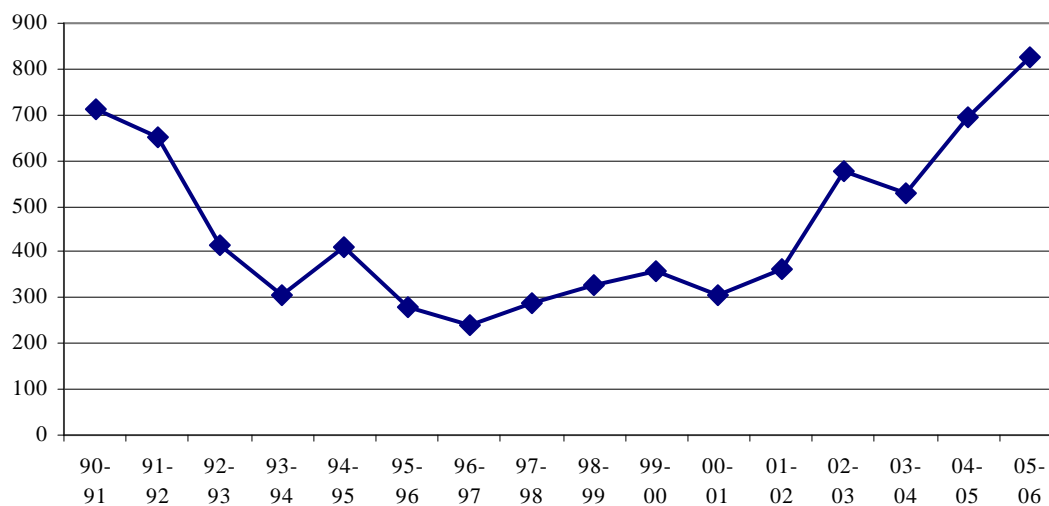
New York is the second greatest contributor to Luzerne County’s in-migration totals. From 1990 to 2006, a total of 7,523 or 9.9 percent of Luzerne County’s in-migrants came from New York. The chart below demonstrates how New York migration totals to Luzerne County exploded between 1999 and 2006. Conversely, from 1990 to 1999, such migration was generally in decline. By 2006, the total number of in-migrants (1,188) to Luzerne County was more than triple the 1990 total (366).

Luzerne County In-Migration: New York



From 1990 to 2006, New Jersey provided the third-highest number of in-migrants to Luzerne County. During the time period, New Jersey contributed 7,282 or 9.5 percent of the county’s total in-migrants. The chart below shows that migration from New Jersey to Luzerne County is similar to that of New York. From 1990 to 2000, New Jersey’s contribution declined, with totals dropping as low as 239 in 1997, however today Luzerne County continues to experience increases in the number of in-migrants from New Jersey, with the largest total recorded (825) in 2006.

**Luzerne County In-Migration: New Jersey**



## **VI. Breaking Down the Source**

### ***Pennsylvania Migration Data***

From 1990 to 2006, a total of 54,185 residents migrated to Luzerne County from other Pennsylvania counties. Of that total, 22,254 or 22.6 percent migrated between 2000 and 2006. To determine the specific Pennsylvania counties that contributed to Luzerne County's population increase, The Institute considers county contribution totals for two time periods: 1990 to 2006 and 2000 to 2006.

The following table details the counties contributing most to Luzerne County's in-migration growth from 1990 to 2006 and from 2000 to 2006. Within Pennsylvania, Lackawanna, Columbia, and Schuylkill Counties remain first, second, and third, respectively, for both time-periods. Pennsylvania's Monroe County moved from ranking as the sixth highest contributor to Luzerne County to ranking fourth. New York's Kings County moved from ranking eighth to sixth, and Queens County moved from ranking twelfth to eighth.

Luzerne County In-Migration					
1990 to 2006			2000 to 2006		
Rank	County	Total	Rank	County	Total
1	Lackawanna	10,869	1	Lackawanna	4,631
2	Columbia	6,475	2	Columbia	2,376
3	Schuylkill	4,811	3	Schuylkill	1,988
4	Wyoming	3,733	4	Monroe	1,553
5	Carbon	3,655	5	Carbon	1,523
6	Monroe	2,968	6	Kings	1,400
7	Philadelphia	1,969	7	Wyoming	1,392
8	Kings	1,958	8	Queens	832
9	Montgomery	1,769	9	Philadelphia	804
10	Bucks	1,726	10	Montgomery	717
11	Lehigh	1,673	11	Bronx	691
12	Queens	1,420	12	Lehigh	638
13	Middlesex	973	13	Bucks	632
14	Northampton	967	14	Passaic	514
15	Wayne	915	15	Wayne	454
16	Berks	889	16	Northampton	447
17	Dauphin	856	17	New York	444
18	Passaic	777	18	Hudson	428
19	New York	757	19	Essex	413
20	Bronx	754	20	Berks	387
21	Suffolk	742	21	Suffolk	338
22	Hudson	695	22	Dauphin	317
23	Essex	680	23	Middlesex	293

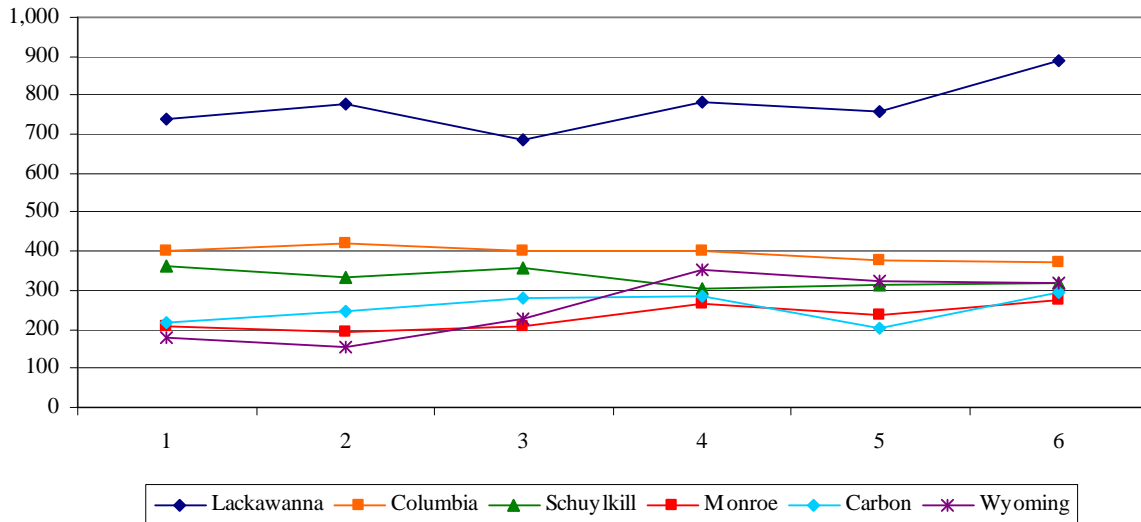
The table below identifies and ranks the number of people migrating from other Pennsylvania counties into Luzerne County. For our purposes, the chart identifies the top ten contributing counties during each time-period. Each time-period includes the same ten counties, identifying a consistent in-migration pattern. Lackawanna County was the largest contributor for both time periods, followed by Columbia and Schuylkill Counties.

**Luzerne County In-Migration: Pennsylvania Counties**

1990 to 2006			2000 to 2006		
Rank	County	Total	Rank	County	Total
1	Lackawanna	10,869	1	Lackawanna	4,631
2	Columbia	6,475	2	Columbia	2,376
3	Schuylkill	4,811	3	Schuylkill	1,988
4	Wyoming	3,733	4	Monroe	1,552
5	Carbon	3,655	5	Carbon	1,523
6	Monroe	2,968	6	Wyoming	1,392
7	Philadelphia	1,969	7	Philadelphia	804
8	Montgomery	1,769	8	Montgomery	717
9	Bucks	1,726	9	Lehigh	638
10	Lehigh	1,673	10	Bucks	632

Although the same ten counties are listed during both time-periods, it is important to note that the order of top ten contributors differs. As mentioned in this report's introduction, this section details specific counties that had a major influence on Luzerne County's in-migration totals from 2000 to 2006. To help identify patterns, migration totals are plotted for the top six contributors represented in both time-periods.

Luzerne County In-Migration by PA County 2000 to 2006



Four of the six counties remained constant during both time-periods, including Columbia, Schuylkill, Wyoming, and Carbon Counties. The other counties plotted (Lackawanna and Monroe Counties), experienced notable increases, particularly between 2000 and 2006. Lackawanna County contributed the largest number of in-migrants to Luzerne County during that time (150), followed by Monroe County (139). The table below identifies migration changes.

In-Migration Change 2000 to 2006							
County	00-01	01-02	02-03	03-04	04-05	05-06	Change
Lackawanna	739	777	685	783	758	889	150
Columbia	400	422	401	403	376	374	-26
Schuylkill	364	332	357	302	312	321	-43
Wyoming	209	195	209	266	236	277	68
Carbon	215	244	278	286	205	295	80
Monroe	179	156	225	352	322	318	139
Philadelphia	97	108	156	119	182	142	45

**Net Migration**

While this study focuses on in-migration to Luzerne County, we cannot fail to examine net migration flow in and out of Luzerne County. Net migration allows us to get an accurate sample of the county's true population shifts. For the purposes of this study,

net migration is out-migration subtracted from in-migration. When calculated, the influential counties change dramatically. Below are the top ten counties with the most in-migration to Luzerne County. When out-migration is accounted for, Lackawanna County remains at the top with a net in-migration of 1,506 to Luzerne County. Columbia County, however, presents a different pattern; while it ranks second in terms of in-migration to Luzerne County, it shows a net loss of 529 people. The same is true for several of the other counties listed. Counties experiencing a net population loss are highlighted in yellow.

**Luzerne County Net Migration 1990-2006**  
**Pennsylvania Counties**

County	Into Luzerne County	Out of Luzerne County	Net
Lackawanna	10,869	9,363	1,506
Columbia	6,475	7,004	-529
Schuylkill	4,811	4,673	138
Wyoming	3,733	4,004	-271
Carbon	3,655	3,533	122
Monroe	2,968	4,004	-1,036
Philadelphia	1,969	1,964	5
Montgomery	1,769	2,240	-471
Bucks	1,726	1,424	302
Lehigh	1,673	2,054	-381

From this data, The Institute is able to draw a few conclusions about Luzerne County's in-migration patterns:

- Lackawanna County provided to Luzerne County the greatest number of in-migrants, and its contributions continue to grow – particularly between the 2000 and 2006 time-period; this period represents Luzerne County's hot zone of growth.
- From 1990 to 2006, Columbia and Schuylkill Counties consistently remained the second and third highest contributors to Luzerne County's in-migration patterns. It is important to note, however, that over the time-period, their percentages of total in-migrants to Luzerne County have declined.

### ***New York Migration Data***

As we have discovered, New York was the second largest contributor to Luzerne County’s in-migration patterns from 1990 to 2006. The state sent a total of 7,523 residents to Luzerne County during the time-period. Just like Pennsylvania, New York’s in-migration to Luzerne County has steadily increased from 2000 to 2006 – the time period most vital in Luzerne County’s recent population shift.

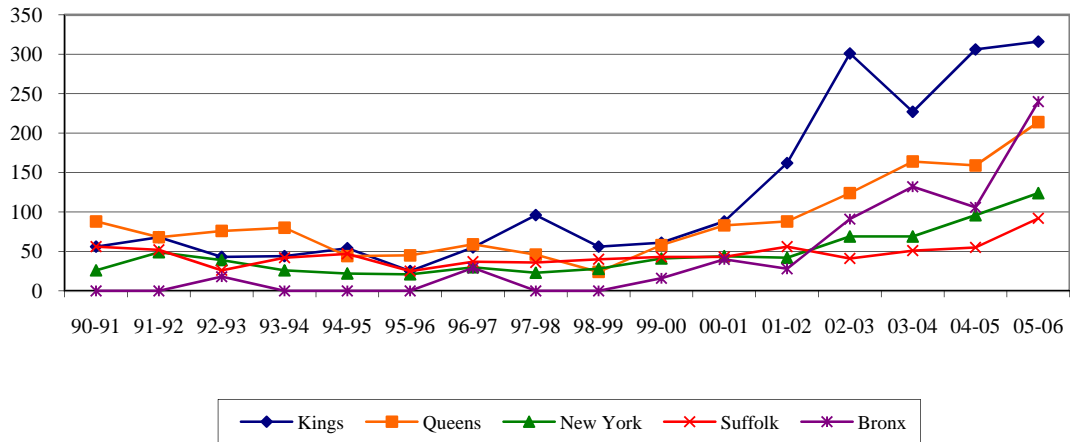
#### **Luzerne County In-Migration: New York Counties**

1990 to 2006			2000 to 2006		
Rank	County	Total	Rank	County	Total
1	Kings	1,958	1	Kings	1,400
2	Queens	1,420	2	Queens	832
3	New York	757	3	Bronx	691
4	Suffolk	742	4	New York	444
5	Bronx	754	5	Suffolk	338
6	Nassau	549	6	Nassau	271
7	Broome	506	7	Broome	195
8	Westchester	237	8	Richmond	118
9	Orange	167	9	Westchester	106
10	Onondaga	136	10	Orange	102

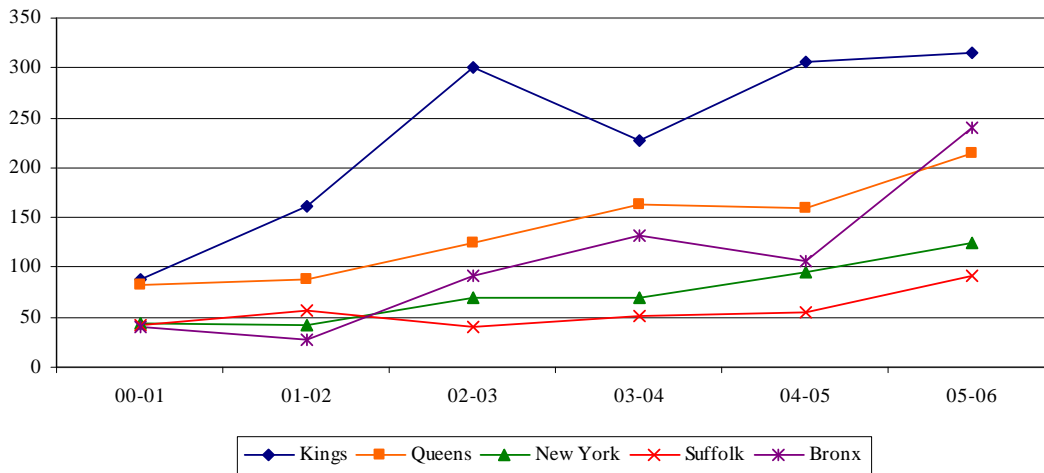
Examining both time-periods, the top five contributors for each is comprised of the same five counties, including Kings, Queens, New York, Suffolk, and Bronx Counties. Kings County, followed by Queens County, were the greatest contributors for both time periods.

Again, although the top five contributors for each time period are comprised of the same counties, the ranking order for each period differs. To determine the most influential New York counties to Luzerne County’s in-migration and population growth, New York’s migration patterns are plotted on the chart below for both time periods.

Luzerne County In-Migration by NY County: 1990 to 2006



Luzerne County In-Migration by NY County: 2000 to 2006



**In-Migration Change: 2000 to 2006**

County	00-01	01-02	02-03	03-04	04-05	05-06	Change
Kings	88	162	301	227	306	316	228
Bronx	40	28	91	132	106	240	200
Queens	83	88	124	164	159	214	131
New York	44	42	69	69	96	124	80
Suffolk	43	56	41	51	55	92	49

**Net Migration**

The Institute also examined net migration for ten New York counties. Below are the top ten counties contributing to the most in-migration to Luzerne County. When net migration is calculated we find that there is no migration loss to any of these counties. It also shows the tremendous influence the counties have on Luzerne County. Kings and Queens Counties rank first and second highest for in-migration to Luzerne County, and in terms of overall net migration. The table below shows that the New York counties with most residents moving to Luzerne County are losing population. Kings County, for example, had 1,958 people move into Luzerne County but only gained 385 people from Luzerne County. The data shows Luzerne County had a net gain of 1,573 people from 1990-2006 from Kings County.

**Luzerne County Net Migration 1990-2006  
New York Counties**

County	Into Luzerne County	Out of Luzerne County	Net
Kings	1958	385	1573
Queens	1420	290	1130
New York	757	558	199
Suffolk	742	272	470
Bronx	754	176	578
Nassau	549	31	518
Broome	506	371	135
Westchester	237	12	225
Orange	167	0*	167
Onondaga	136	121	15

Looking at this data, The Institute can draw a few conclusions about New York's influence on Luzerne County's migration figures.

- The majority, or 75 percent, of all in-migration to Luzerne County from New York originated from just five counties (2000 to 2006).
- In-migration figures for each of the five counties continue to increase annually.
- During Luzerne County’s hot zone of growth, Kings, Queens, Bronx, and New York Counties were its major contributors.

From this data, it is evident that the greatest influence on Luzerne County’s in-migration data from 2000 to 2006 is from New York’s Kings, Queens, Bronx, and New York Counties.

### ***New Jersey Migration Data***

New Jersey is the third greatest contributor to Luzerne County’s in-migration totals from 1990 to 2006. During that time period, New Jersey contributed 7,282 people, or 9.5 percent of Luzerne County’s total in-migration population. More importantly, 3,292 or 45 percent of the total migration occurred between 2000 and 2006.

The table below identifies the number of people migrating to Luzerne County from New Jersey during the examined time-periods. Again, this table identifies the top ten contributors for each time-period. As found in both Pennsylvania and New York, each category contains the same ten counties, but with a twist in rank.

**Luzerne County In-Migration: New Jersey Counties**

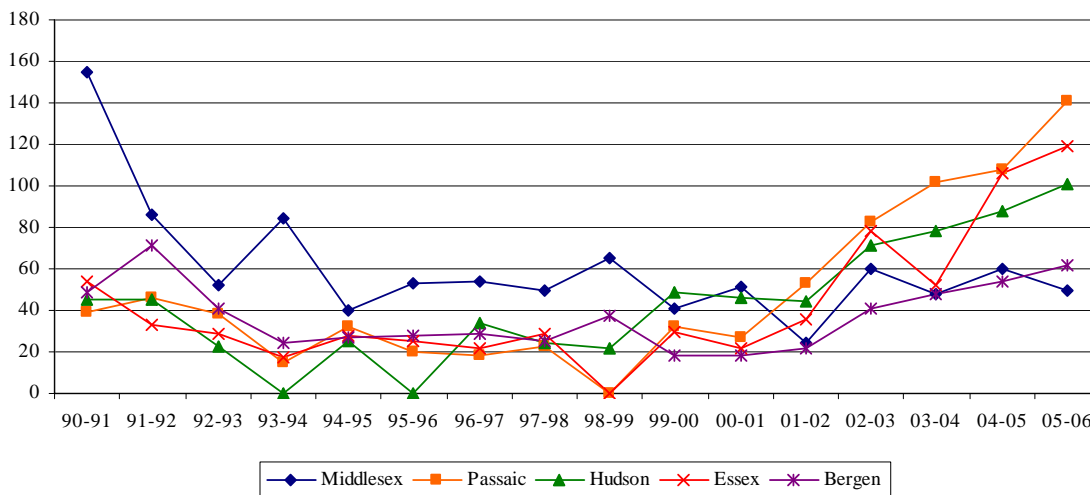
1990 to 2006			2000 to 2006		
Rank	County	Total	Rank	County	Total
1	Middlesex	973	1	Passaic	514
2	Passaic	777	2	Hudson	428
3	Hudson	695	3	Essex	413
4	Essex	680	4	Middlesex	293
5	Bergen	594	5	Bergen	245
6	Morris	577	6	Union	223
7	Union	536	7	Morris	218
8	Burlington	482	8	Monmouth	182
9	Monmouth	406	9	Burlington	160
10	Somerset	404	10	Somerset	151

From 1990 to 2006, Middlesex County provided the greatest number of in-migrants to Luzerne County (973), followed by Passaic County (777), Hudson County (695), and

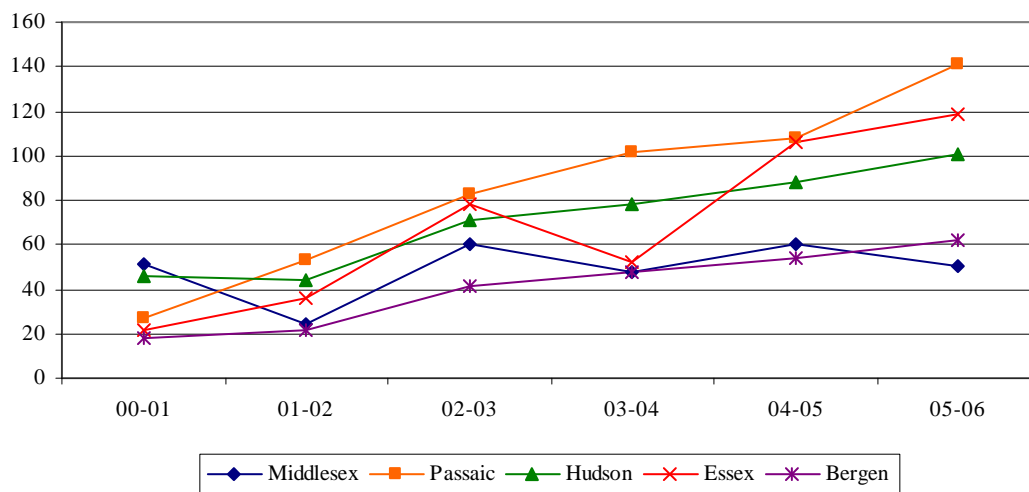
Essex County (680). However, when examining figures from 2000 to 2006, Middlesex County ranks fourth in terms of total in-migrants to Luzerne County. From 2000 to 2006, Passaic County contributed the most in-migrants to Luzerne County (514), followed by Hudson County (428), Essex County (413), and Middlesex County (293). All four counties represent the top four counties in each category.

The following charts help identify migration patterns of each of the four New Jersey counties mentioned above, from 1990 to 2006 and from 2000 to 2006.

**Luzerne County In-Migration: New Jersey 1990 to 2006**



Luzerne County In-Migration: New Jersey 2000 to 2006



Essex, Hudson, and Passaic Counties experienced increases in in-migration totals to Luzerne County, particularly from 1999 to 2006 – the hot zone of Luzerne County’s growth. Middlesex County shows an interesting pattern. As noted, Middlesex County contributed the largest number of in-migrants to Luzerne County from 1990 to 2006, but dropped in ranking when compared with the 2000 to 2006 time-period.

**In-Migration Change 2000 to 2006**

County	00-01	01-02	02-03	03-04	04-05	05-06	Change
Passaic	27	53	83	102	108	141	114
Essex	22	36	78	52	106	119	97
Hudson	46	44	71	78	88	101	55
Bergen	18	22	41	48	54	62	44
Middlesex	51	24	60	48	60	50	-1

When examining the change in contributions between 2000 and 2006 for these four counties, in 2006, Essex, Hudson, and Passaic Counties experienced increases over their 2000 totals for population contributions to Luzerne County, while Middlesex County experienced a decrease.

## Net Migration

Next The Institute examined net migration for ten New Jersey counties. The table below details the top ten counties contributing the most in-migration to Luzerne County. When net migration is calculated, it is revealed that there is no migration loss from Luzerne County to any of these counties. It also shows the tremendous influence these counties have on Luzerne County. Middlesex and Passaic Counties have the first and second highest in-migration to Luzerne County, and this remains true for net migration.

**Luzerne County Net Migration 1990-2006**  
**New Jersey Counties**

County	Into Luzerne County	Out of Luzerne County	Net
Middlesex	973	485	488
Passaic	777	104	673
Hudson	695	307	388
Essex	680	135	545
Bergen	594	280	314
Morris	577	358	219
Union	536	62	474
Burlington	482	284	198
Monmouth	406	217	189
Somerset	404	105	299

From this data, The Institute can draw certain conclusions regarding New Jersey's in-migration impact on Luzerne County.

- Essex, Hudson, Passaic, and Middlesex Counties represented the four highest in-migration contributors to Luzerne County from 1990 to 2006 and from 2000 to 2006.
- All ten New Jersey counties examined contributed a positive net migration to Luzerne County.
- Essex, Hudson, and Passaic Counties continue to experience increases in the number of migrants shipping to Luzerne County.

From this data, we know that the greatest influence on Luzerne County's in-migration data from 2000 to 2006 came from New Jersey's Essex, Hudson, and Passaic Counties.

## V. Conclusion

In this report, The Institute sought to examine Luzerne County's migrations flows. Through such examination, we pinpointed the states and counties most affecting Luzerne County's population. Once identified, THE INSTITUTE was then able to calculate Luzerne County's annual migration data from 1990 to 2006. This data helped us to identify the states that most contribute to Luzerne County's in-migration patterns. To dig deeper, we then shifted focus to the migration patterns of three states – Pennsylvania, New York and New Jersey – from 2000 to 2006 – and the counties within those states that most heavily contributed to Luzerne County's in-migration growth.

- *In Pennsylvania:* Lackawanna, Columbia, Schuylkill, Monroe, and Carbon Counties
- *In New York:* Kings, Queens, Bronx, and New York Counties
- *In New Jersey:* Passaic, Hudson and Essex Counties

It is also important to note that although these counties significantly ranked highest in their state in accordance with in-migration, ranks changed with total net migration. Net migration ranks take into account out-migration and are listed below.

- *In Pennsylvania:* Lackawanna, Schuylkill, and Carbon
- *In New York:* Kings, Queens, New York, Suffolk and Bronx Counties
- *In New Jersey:* Middlesex, Passaic, Hudson Essex, and Bergen Counties

For so many years, Luzerne County has experienced population decreases. An aging population and a younger generation looking for opportunities our region does not yet provide are just two of the many causes. But as Luzerne County continues to invest in its businesses and people, migrants will continue to move to the area for employment, lower cost housing, good education for their children, as well as shopping, entertainment, sports and the many other amenities are just beginning to take shape.

The **INSTITUTE** for  

---

**Public Policy & Economic Development**

*A partnership among Keystone College, King's College, Luzerne County Community College,  
Marywood University, Misericordia University, Penn State Wilkes-Barre, University of Scranton, &  
Wilkes University*

7 South Main Street, Suite 201  
Wilkes-Barre, Pennsylvania 18701

120 Wyoming Avenue, Third Floor  
Scranton, PA 18503

t: 570-408-9850  
f: 570-408-9854  
w: [www.urbanstudies.org](http://www.urbanstudies.org)

**DECEMBER 2008**  
FORMERLY KNOWN AS JOINT URBAN STUDIES CENTER (JUSC)