

The **INSTITUTE** for

Public Policy & Economic Development



**THE RISE OF LUZERNE COUNTY:
AN EXAMINATION OF THE ORIGIN AND
FUTURE EFFECTS OF RECENT POPULATION SHIFTS**

2007 UPDATE

**JOINT URBAN STUDIES CENTER
FEBRUARY 2009**

The **INSTITUTE** for

Public Policy & Economic Development

7 South Main Street, Suite 201 Wilkes-Barre, Pennsylvania 18701
t: 570.408.9850 f: 570.408.9854

120 Wyoming Avenue, Third Floor, Scranton, PA 18503
t: 570.207.0340 f: 570.408.9854

info@institutepa.org
www.institutepa.org

Staff

Teri Ooms
Executive Director

Sherry Tracewski
Research and Policy Analyst

Marla Doddo
Administrative and Outreach
Coordinator

Copyright © 2009 The Institute for Public Policy & Economic Development. All Rights Reserved. No part of this publication may be copied or reproduced in any form or by any means without permission in writing from The Institute.

The Institute for Public Policy & Economic Development

The Institute for Public Policy & Economic Development (formerly Joint Urban Studies Center) was established to provide essential research, analysis, and consultation to small and mid-size cities aiming for full participation in the new economy of the 21st century. The Institute mobilizes the resources of regional institutions of higher education to engage communities in planning that is informed by research, energized by broad participation from stakeholders in the community, and validated by successful implementation. As the managing partner in the Center, Wilkes University is joined by Keystone College, King’s College, Marywood University, Misericordia University, Luzerne County Community College, Penn State Wilkes-Barre, and the University of Scranton.

Note

The views expressed here do not necessarily reflect those of the educational partners, their offices, trustees or board members, or private businesses that fund The Institute or the staff of The Institute.

Acknowledgements

We would like to acknowledge The Institute for its time, effort, and commitment to this region:

William P. Montague Founder <i>Mark IV Industries</i>	Jim DePolo <i>Covington Forge Ltd.</i>	Anne Munley, IHM, Ph.D. <i>Marywood University</i>
Tim Gilmour, Ph.D., Chairman <i>Wilkes University</i>	Christopher Haran <i>Great Valley Technology Alliance</i>	Thomas J. O’Hara, C.S.C., Ph.D. <i>King’s College</i>
William B. Sordoni, Vice-Chairman <i>Sordoni Construction Company</i>	William Host <i>Wyoming Valley Health Care Systems</i>	Scott Pilarz, S.J. <i>University of Scranton</i>
Thomas Baldino, Ph.D. Chairman Academic Council <i>Wilkes University</i>	Charles Kasko <i>Custom Signature Homes</i>	Russell Roberts <i>Bohlin Cywinski Jackson</i>
Rich Beasley <i>PPL Electric</i>	Thomas E. Lawson <i>Borton Lawson</i>	Thomas Romanowski <i>GreenSpace Properties LLC</i>
Edward Boehm, Ph.D. <i>Keystone College</i>	Thomas Leary, Ph.D. <i>Luzerne County Community College</i>	Eugene Roth <i>Rosem, Jenkins, and Greenwald</i>
Terry Casey <i>M&T Bank</i>	David Lee <i>United Way of Wyoming Valley</i>	Connie Schintz <i>Geisinger Health Systems</i>
John Cefaly <i>Cushman & Wakefield</i>	Michael MacDowell, Ph.D. <i>Misericordia University</i>	Susan W. Shoval <i>GUARD Insurance Group</i>
Charles Davis, Ph.D. <i>Penn State Wilkes-Barre</i>	Melanie Maslow Lumia <i>Maslow Lumia Bartorillo Advertising</i>	Todd Vonderheid <i>Greater Wilkes-Barre Chamber of Business & Industry</i>

Table of Contents

I. Introduction	4
II. In and Out Migration Update	4
III. Understanding the Source Update	7
IV. Breaking Down the Source Update	8
V. Net Migration Update	9
VI. County Rankings Update	10
V. Conclusion	11

I. Introduction

Since The Institute for Public Policy & Economic Development (the “Institute”) last examined Luzerne County’s population shift in our report *The Rise of Luzerne County*, more migration data from the Internal Revenue Service (IRS) has become available. New data now includes the years 2006-2007, and, as a result of this additional information, a brief update to the report is now warranted. This report demonstrates Luzerne County’s 2006-2007 population changes.

II. In and Out Migration Update

The total in-migration for Luzerne County in 2006-2007 was 8,556, an increase of .8 percent from the 2005-2006 time period. The total out-migration in 2006-2007 was 7,403. This was a 1.4 percent change. In the specified time period there was a net gain of 1,153 migrants.

Luzerne County Migration 2006-2007		
In	Out	Net
8,556	7,403	1,153

The table below includes in-migration data for the years 1990 to 2007. The previous report included data for the years 1990 to 2006 only.

Luzerne County In-Migration: 1990 to 2007			
Rank	Location	Total	%
1	Pennsylvania	57,896	69.7%
2	New York	8,907	10.7%
3	New Jersey	8,277	10.0%
4	Florida	1,734	2.1%
5	Foreign	1,359	1.6%
6	Maryland	752	0.9%
7	California	751	0.9%
8	Connecticut	644	0.8%
9	Virginia	500	0.6%
10	Massachusetts	421	0.5%
11	Arizona	376	0.5%
12	Delaware	361	0.4%
13	North Carolina	267	0.3%
14	Nevada	251	0.3%
15	Illinois	174	0.2%
16	Texas	98	0.1%
17	Hawaii	97	0.1%
18	Rhode Island	45	0.1%
19	Washington, DC	43	0.1%
20	Ohio	36	0.0%
21	South Carolina	33	0.0%
22	Michigan	22	0.0%
23	Washington	16	0.0%

Several population changes have occurred since the 2006 and 2007 data became available. First, Luzerne County's percentage of in-migration from other Pennsylvania counties decreased from 71.0% to 69.7%. The percentage of migrants from the state of New York increased from 9.9% to 10.7%, and the number of migrants from the state of New Jersey increased from 9.5% to 10.0%.

The table below, which includes the most recent data available, is an update to a table included in the Institute's prior report.

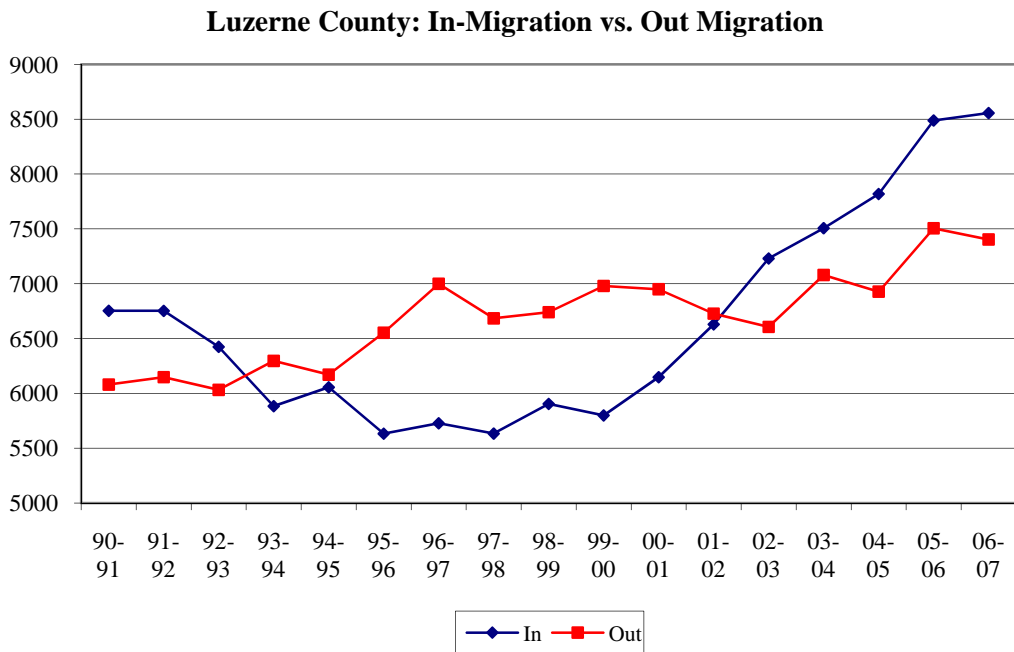
Luzerne County Out-Migration: 1990 to 2007			
Rank	Location	Total	%
1	Pennsylvania	59,215	73.3%
2	Florida	4,865	6.0%
3	New Jersey	3,631	4.5%
4	New York	3,171	3.9%
5	Foreign	1,913	2.4%
6	Maryland	1,614	2.0%
7	Virginia	977	1.2%
8	Arizona	877	1.1%
9	California	822	1.0%
10	North Carolina	745	0.9%
11	Delaware	648	0.8%
12	Nevada	502	0.6%
13	Massachussetts	415	0.5%
14	Connecticut	290	0.4%
15	Texas	237	0.3%
16	South Carolina	279	0.3%
17	Illinois	206	0.3%
18	Washtonton, DC	180	0.2%
19	Ohio	103	0.1%
20	Colorado	48	0.1%
21	Hawaii	48	0.1%
22	Vermont	16	0.0%
23	Rhode Island	11	0.0%

For the 2006 and 2007 period, .1% fewer Luzerne County residents moved to counties within Pennsylvania or the state of Florida. The county's out-migrants to the state of New York increased by .2%.

The table below examines the migration patterns beginning in 2002. There was a positive net migration each year. From 2002 to the present, Luzerne County gained an additional 4,078 residents.

Luzerne County Migration Data: 2002-2007			
	In	Out	Net
2002-2003	7,230	6,606	624
2003-2004	7,506	7,079	427
2004-2005	7,818	6,927	891
2005-2006	8,488	7,505	983
2006-2007	8,556	7,403	1,153
Total	39,598	35,520	4,078

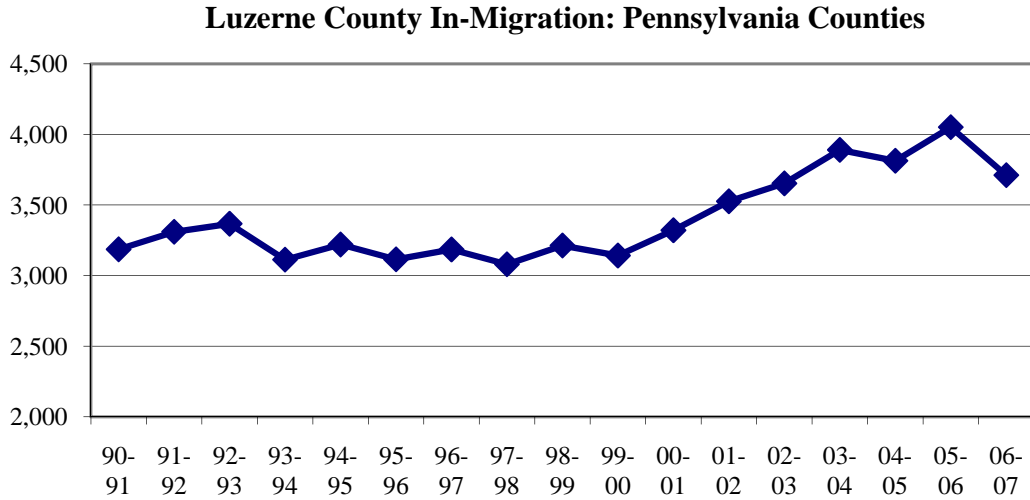
The chart below illustrates in-migration vs. out-migration trends for Luzerne County, with the addition of 2006-2007 data.



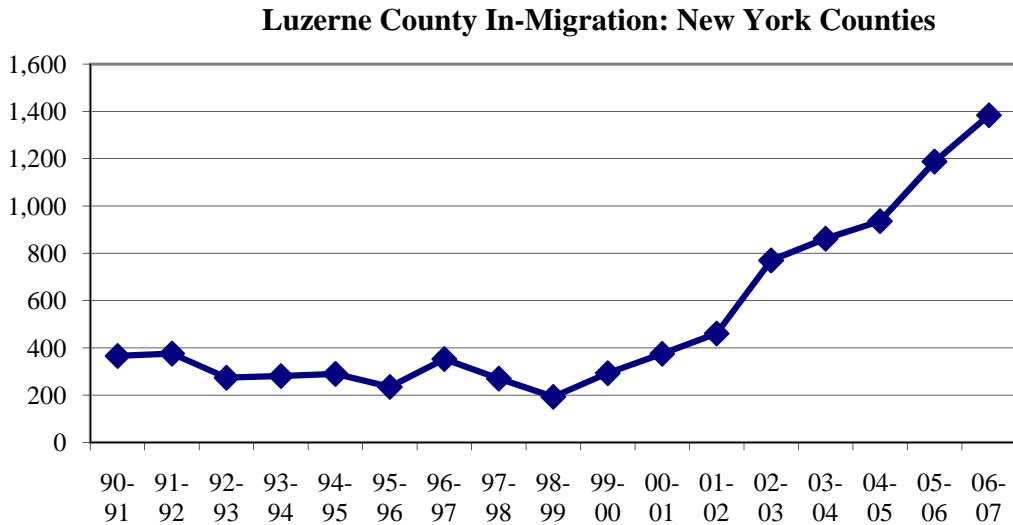
III. Understanding the Source Update

In order to better demonstrate the direction of each state's in-migration patterns, the charts below have been updated to include 2006-2007 data.

In-migration to Luzerne County from other Pennsylvania counties decreased from 4,051 in the 2005-2006 period to 3,711 in the 2006-2007 period.

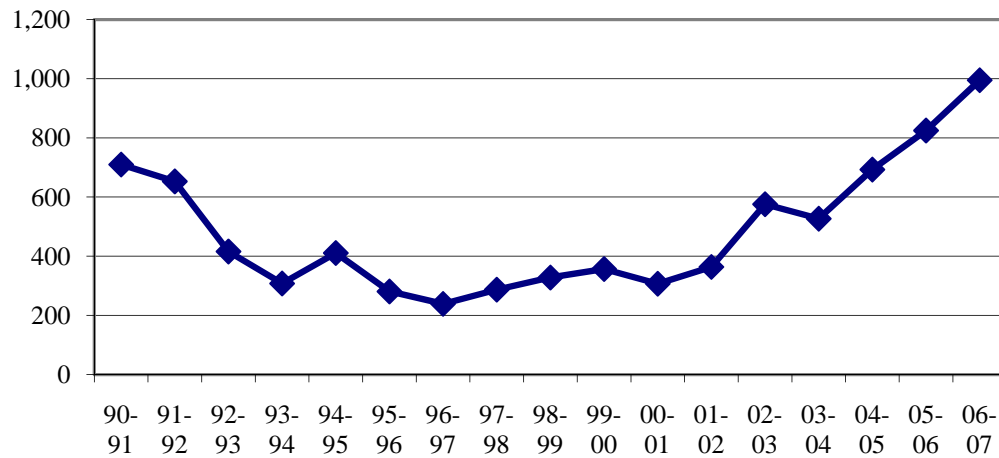


In-migration to Luzerne County from New York counties increased from 1,188 in the 2005-2006 period to 1,384 in the 2006-2007 period - continuing an upward trend.



In-migration to Luzerne County from New Jersey counties has increased from 825 in the 2005-2006 period to 995 in the 2006-2007 period.

Luzerne County In-Migration: New Jersey Counties



IV. Breaking Down the Source Update

In this section, one major county rank change is notable. From 1990 to 2006, New York state's New York County ranked 3rd, Suffolk County ranked 4th, and Bronx County ranked 5th; since 2007 data became available, these counties have changed in rank. Bronx County now ranks 3rd, New York County ranks 4th and Suffolk County ranks 5th.

Luzerne County In-Migration: New York Counties

1990 to 2007			2000 to 2007		
Rank	County	Total	Rank	County	Total
1	Kings	2,332	1	Kings	1,774
2	Queens	1,663	2	Queens	1,075
3	Bronx	1,019	3	Bronx	956
4	New York	952	4	New York	639
5	Suffolk	832	5	Suffolk	428
6	Nassau	603	6	Nassau	325
7	Broome	526	7	Broome	215
8	Westchester	275	8	Richmond	147
9	Orange	193	9	Westchester	144
10	Onondaga	136	10	Orange	128

V. Net Migration Update

Several major net migration changes occurred from 1990 to 2006 and from 1990 to 2007. In Pennsylvania, Schuylkill County's net migration increased from 4 in the 1990-2006 period to 138 in the 1990-2007 period. Carbon County's net migration also increased from 70 to 122. Philadelphia County was the only Pennsylvania county to recover from a negative number of net migrants, which jumped from -26 in the 1990-2006 period to 5 in the 1990-2007 period. Lackawanna County's net migration figures also slightly decreased from 1,586 to 1,506. Pennsylvania's Wyoming, Monroe, Montgomery, Bucks, and Lehigh Counties also continued net migration decreases.

Luzerne County Net Migration 1990-2006: Pennsylvania Counties

County	Into Luzerne County	Out of Luzerne County	Net
Lackawanna	10,869	9,363	1,506
Columbia	6,475	7,004	-529
Schuylkill	4,811	4,673	138
Wyoming	3,733	4,004	-271
Carbon	3,655	3,533	122
Monroe	2,968	4,004	-1,036
Philadelphia	1,969	1,964	5
Montgomery	1,769	2,240	-471
Bucks	1,726	1,424	302
Lehigh	1,673	2,054	-381

Luzerne County Net Migration 1990-2007: Pennsylvania Counties

County	Into Luzerne County	Out of Luzerne County	Net
Lackawanna	11,666	10,080	1,586
Columbia	6,826	7,444	-618
Schuylkill	5,128	5,124	4
Wyoming	3,959	4,216	-257
Carbon	3,867	3,797	70
Monroe	3,270	4,120	-850
Philadelphia	2,096	2,122	-26
Montgomery	1,901	2,357	-456
Bucks	1,832	1,494	338
Lehigh	1,823	2,149	-326

VI. County Rankings Update

Several changes in county rankings pertaining to in-migrants contributed to are included in the revised table below. For the entire period (1990-2006 and 1990-2007), several counties changed ranking. Philadelphia County dropped in ranking from 7th to 8th, Kings County increased in ranking from 8th to 7th, Northampton County increased in ranking from 14th to 13th, Middlesex County dropped in ranking from 13th to 14th, Passaic County increased in ranking from 18th to 15th, Bronx County increased in ranking from 20th to 16th, and, lastly, Essex County (23rd) and Hudson County (22nd) swapped rankings.

For the more recent years (2000-2006 and 2006-2007) several counties also changed ranking. Kings County jumped from 7th TO 5th, Queens County jumped from 12th to 8th, Bronx County jumped from 16th to 9th, New York County increased from 19th to 15th, Philadelphia County dropped from 8th to 10th, Montgomery County dropped from 9th to 11th, Bucks County dropped from 10th to 13th, Lehigh County dropped from 11th to 12th, Northampton dropped from 13th to 16th, Wayne County dropped from 17th to 19th, Berks County dropped from 18th to 20th and Dauphin County dropped from 20th to 23rd.

Luzerne County In-Migration						Luzerne County In-Migration					
1990 to 2006			2000 to 2006			1990 to 2007			2000 to 2007		
Rank	County	Total	Rank	County	Total	Rank	County	Total	Rank	County	Total
1	Lackawanna	10,869	1	Lackawanna	4,631	1	Lackawanna	11,666	1	Lackawanna	5,428
2	Columbia	6,475	2	Columbia	2,376	2	Columbia	6,826	2	Columbia	2,727
3	Schuylkill	4,811	3	Schuylkill	1,988	3	Schuylkill	5,128	3	Schuylkill	2,305
4	Wyoming	3,733	4	Monroe	1,553	4	Wyoming	3,959	4	Monroe	1,855
5	Carbon	3,655	5	Carbon	1,523	5	Carbon	3,867	5	Kings	1,774
6	Monroe	2,968	6	Kings	1,400	6	Monroe	3,270	6	Carbon	1,735
7	Philadelphia	1,969	7	Wyoming	1,392	7	Kings	2,332	7	Wyoming	1,618
8	Kings	1,958	8	Queens	832	8	Philadelphia	2,096	8	Queens	1,075
9	Montgomery	1,769	9	Philadelphia	804	9	Montgomery	1,901	9	Bronx	956
10	Bucks	1,726	10	Montgomery	717	10	Bucks	1,832	10	Philadelphia	931
11	Lehigh	1,673	11	Bronx	691	11	Lehigh	1,823	11	Montgomery	849
12	Queens	1,420	12	Lehigh	638	12	Queens	1,663	12	Lehigh	788
13	Middlesex	973	13	Bucks	632	13	Northampton	1,084	13	Passaic	767
14	Northampton	967	14	Passaic	514	14	Middlesex	1,050	14	Bucks	738
15	Wayne	915	15	Wayne	454	15	Passaic	1,030	15	New York	639
16	Berks	889	16	Northampton	447	16	Bronx	1,019	16	Northampton	564
17	Dauphin	856	17	New York	444	17	Wayne	986	17	Essex	560
18	Passaic	777	18	Hudson	428	18	Berks	955	18	Hudson	534
19	New York	757	19	Essex	413	19	New York	952	19	Wayne	525
20	Bronx	754	20	Berks	387	20	Dauphin	896	20	Berks	453
21	Suffolk	742	21	Suffolk	338	21	Suffolk	832	21	Suffolk	428
22	Hudson	695	22	Dauphin	317	22	Essex	827	22	Middlesex	370
23	Essex	680	23	Middlesex	293	23	Hudson	801	23	Dauphin	357

V. Conclusion

In conclusion, it's obvious that migration patterns change over the course of a year. For just the 2006-2007 time period, counties contributing to Luzerne County's in-migration significantly changed in their rankings. From previous data in recent years, the continuing trend of an increase in New York migrants to Pennsylvania is sustained by the changes in rank and increases in in-migrants from the New York Counties listed above.

In conclusion, it's obvious that migration patterns change over the course of a year. For the 2000 to 2007 period, more than half of the counties included in the rankings changed place due to migration pattern fluctuations between 2006 and 2007. As previously discussed, the state of Massachusetts contributed its first migrants to Lackawanna County between 2006 and 2007; this may be the beginning of a trend that lasts for years.



7 South Main Street, Suite 201, Wilkes-Barre, Pennsylvania 18701
t: 570-408-9850 f: 570-408-9854

120 Wyoming Avenue, Third Floor, Wilkes-Barre, PA 18701
t: 570207.0340 f: 570.408.9854

info@institutepa.org
www.institutepa.org

**THE INSTITUTE FOR PUBLIC POLICY & ECONOMIC DEVELOPMENT
FEBRUARY 2009**