

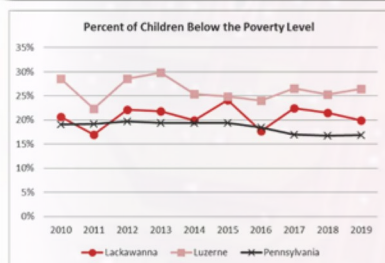
The Institute

Turning Information into Insight

Economic, Impact, Health,
Social, and Education
Research, Evaluation, and
Consulting

Indicators 2021 was a success!

Social Services Indicators



As of Spring 2021,

26% of Pennsylvanians
Struggle to Pay Usual
Household Expenses

9% of Pennsylvanians
Face Food Insecurity

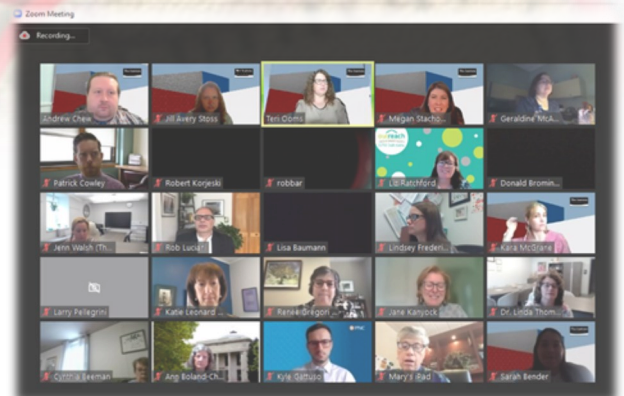
12% of PA Renters
Behind on Rent
Payment



Sincere thanks to all who participated!

In this Issue:

- Indicators 2021
- Special Thanks to Sponsors
- 2021 Task Force Research
- Institute Insights into COVID-19
- Regional Data Dashboard
- Team Transitions
- New Issues of the Quarterly Economy Tracker and Policy Tracker Available
- Client Solutions



A collaboration among Geisinger Commonwealth School of Medicine, Johnson College, Keystone College, King's College, Lackawanna College, Luzerne County Community College, Marywood University, Misericordia University, Penn State Scranton, Penn State Wilkes-Barre, The Wright Center or Graduate Medical Education, University of Scranton, and Wilkes University

Many Thanks

TO OUR 2021 COMMUNITY-BASED UNDERWRITERS
AND INDICATORS EVENT SPONSORS!

SIGNATURE UNDERWRITERS

Andrew J. Sordoni Foundation
Luzerne County
PPL Electric Utilities
Sordoni Family Foundation

CONTRIBUTING UNDERWRITERS

Borton-Lawson
Geisinger Health System
WVIA

SUPPORTING UNDERWRITERS

Berkshire Asset Management
BlackOut Design
FNCB
Greater Hazleton CANDO
Highmark Blue Cross Blue Shield
M&T Bank
McCarthy Tire

Navient
PNC
Prudential
The Luzerne Foundation
The Wright Center for Community Health
Topp Business Solutions
UGI Utilities

MAIN EVENT SPONSOR

The Wright Center
for Community Health
& Graduate Medical Education

GOLD SPONSORS

Allied Services Integrated Health System
Coal Creative
UGI Utilities
Scranton Area Community Foundation

SILVER SPONSORS

Marywood University
The Scranton Plan

BRONZE SPONSORS

Berkshire Hathaway Guard Insurance
Community Bank
Johnson College
Luzerne County Visitor Bureau

2021 Task Force Research

Education & Workforce Development: As the labor market recovers, it is important to plan for a return to tight conditions and shortages of skilled workers in a number of key occupations—and to attract and retain younger workers in the region. This research determines which skillsets and certifications are needed, identifies the most influential factors driving out-migration of talent, describes the role of higher education institutions in overall talent attraction and retention, describes the role of K-12 education in the development of a workforce pipeline, and explores how the region can attract an increasingly remote workforce.

Energy: It is essential to monitor the impact of commercial vehicle usage in a logistics-heavy area like Northeastern Pennsylvania. The rise in alternative energy use is detailed in this research, along with the effects of this adoption on economy, infrastructure, and environment.

Health & Health Care: A study of Pennsylvania's public health infrastructure (including historical context and policy issues) reveals implications for resilience to future public health emergencies. Dynamics surrounding county-level and city-level health departments are covered as well, and included where appropriate in the proposal of best practices and alternative models.

Housing: This research explores the region's housing issues as they relate to equity, through a lens including but not limited to race, ethnicity, age, gender, disability, sexual orientation, and gender identity. The influence of COVID-19 is considered too. The current state of housing segregation is mapped, and the historical origins of these patterns revealed. Local, state, and federal housing policies (pertaining to rental and ownership) are examined and recommendations are provided.

Jobs, Economy & Economic Development: Considering the major economic changes induced by COVID-19, this study addresses ways NEPA can compete in light of an enhanced logistics industry and a rise of remote work along with automation across all sectors. Efforts must involve the commercial real estate market, accommodation of in-migration, technology infrastructure, and quality of life concerns.

Planning, Land Use, Transportation & Infrastructure: The theme of transportation continues, with a focus on the short-term and long-term effects of COVID-19 on transportation and land use. The study answers questions such as how transit agencies are coping with social distancing, whether passengers or potential passengers are fearful of public transport, and how increased telework and less economic activity in urban cores impact transit. It also considers the plight of municipal services in communities struggling for revenue, and how they are handling infrastructure improvements such as road and bridge repair.

Institute Insights into COVID-19

The Institute is responding to the COVID-19 crisis through a timely and ambitious program of research.

Our agenda examines the effects of the pandemic on Northeastern Pennsylvania.

It contains data-driven insights to help community members and leaders better understand, address, and overcome unique challenges.

Since the launch of this new initiative in Spring 2020, our team has been hard at work putting together specialized research on COVID-19's impact, along with recommendations for recovery.

Take a look at the latest....

[Read More Here](#)

The Institute extends many thanks to the sponsors of the COVID-19 Research Initiative for 2021:

**Greater Scranton Chamber
of Commerce**
Sordoni Family Foundation

Lackawanna and Luzerne County Indicators

Northeastern Pennsylvania by the Numbers

Population Trends

Population Change since 2000

Lackawanna: - 1.7%

Luzerne: - 0.6%

Statewide: + 4.2%

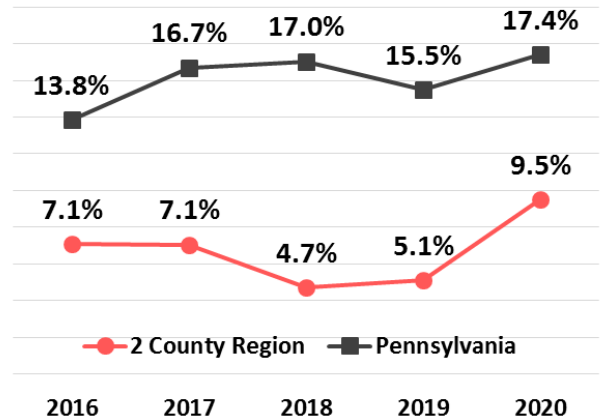
10 Year Net Migration

Lackawanna: - 5,139

Luzerne: + 1,155

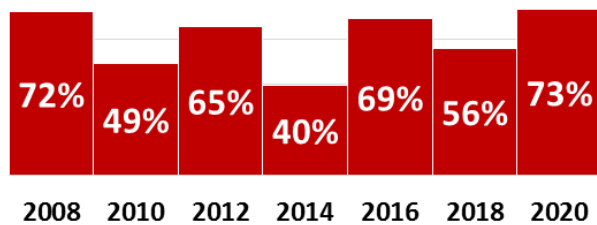
Housing

% of Homeless Households Who Are Unsheltered



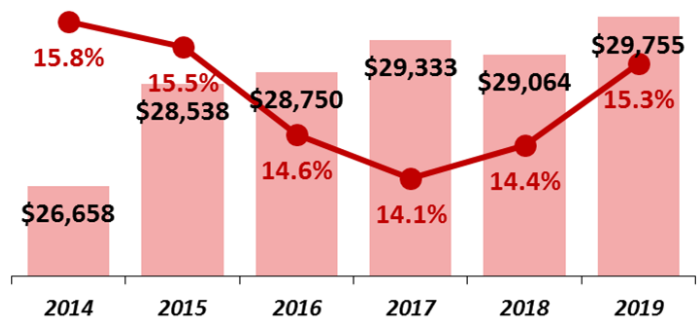
Civic Engagement

Regional Voter Turnout for Select General Elections



Economy

Poverty Rate & Inflation-Adjusted Per Capita Income



Social Equity

Many indicators presented in the report are associated with disparities across various social groups, particularly those of race, ethnicity, and country of birth. This selection of data shows continued inequities and differing trends across demographic groups.

Statewide Mortality Rates for Selected Causes of Death, by Race (2015-2019)

	White	Black	Asian/Pacific Islander	Multiple Races	Hispanic
Cancer	156.9	189.1	78.6	89.1	104.8
Cardiovascular Diseases	217.7	286.6	103.0	130.0	149.2
Diabetes	19.6	31.0	11.0	11.7	22.1
Homicide	2.2	28.2	1.0	3.4	8.0
Suicide	15.6	7.2	6.1	4.6	7.1

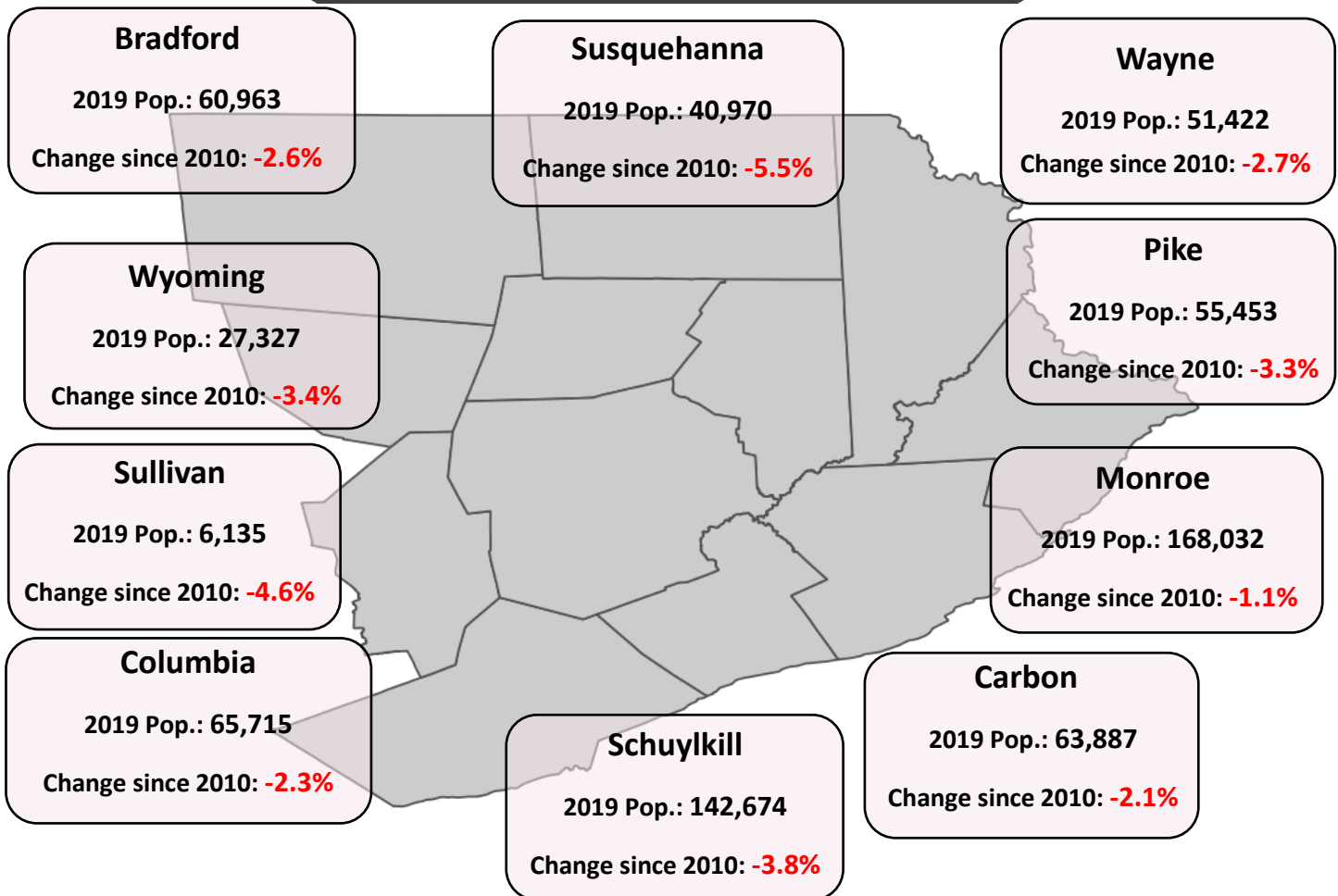
While the causes of these inequities are complex, they often include the influence of systemic and institutional racism.

It is crucial to understand equity indicators in order to more comprehensively inform education, economic development, social services, and public policy.

Northeast Regional Dashboard

For 2021, The Institute has curated a selection of data for counties that neighbor Lackawanna and Luzerne, as well as statistics on cities within the two counties in order to provide critical information to stakeholders serving narrower or broader territories, show how trends vary between urban and rural communities, and highlight the interconnectedness and shared challenges and opportunities of the broader region.

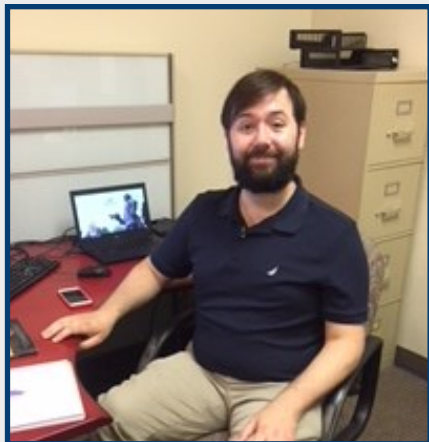
Population Trends



Social Equity

Poverty Rate by Race, Ethnicity, Nativity

	Lackawanna			Luzerne			Pennsylvania		
	2010	2019		2010	2019		2010	2019	
Overall population	13.2%	14.7%	↑	13.7%	14.7%	↑	12.4%	12.4%	→
White alone (not Hispanic or Latino)	11.4%	11.1%	→	11.2%	10.6%	→	9.0%	8.9%	→
Black or African American	39.1%	32.3%	↓	46.5%	44.0%	↓	27.9%	26.0%	↓
American Indian and Alaska Native	11.4%	31.5%	↑	25.8%	42.9%	↑	24.3%	24.6%	→
Asian	11.8%	19.1%	↑	12.4%	16.6%	↑	14.7%	13.9%	→
Native Hawaiian and Other Pacific Islander	0.0%	17.5%	↑	0.0%	7.0%	↑	27.7%	24.5%	↓
Some other race	38.1%	23.8%	↓	35.7%	34.4%	↓	35.2%	31.4%	↓
Two or more races	38.0%	36.1%	↓	31.1%	36.4%	↑	26.0%	22.0%	↓
Hispanic or Latino origin (of any race)	38.3%	45.0%	↑	40.5%	33.5%	↓	31.0%	28.1%	↓
Foreign born	16.0%	17.7%	↑	26.5%	21.1%	↓	15.3%	15.8%	→
Native born	13.1%	14.5%	↑	13.1%	14.3%	↑	12.2%	12.2%	→



Team Transitions

We wish Joe Gallo all the best as he embarks on a new adventure in his career...

...and we enthusiastically welcome Sarah Bender as The Institute's newest Research Assistant!



In case you missed them...

New editions of the Quarterly Economy Tracker and the Policy Tracker are now available!

In the Economy Tracker, read about:

- Food and financial insecurity amid the pandemic
- The connection between wage growth and occupational representation of women
- Changes in employment by industry
- The latest data surrounding the spread of COVID-19 in Northeastern Pennsylvania

In the Policy Tracker, read about:

- COVID-19 vaccination demand, distribution, and accessibility
- The need for closer look at transportation funding
- The status of hearing and vision services through public health insurance
- Opportunities for bridging the housing gap

[Access the issue here!](#)

[Access the issue here!](#)

Client Solutions

Market & Feasibility Studies
Indicators- Indexes
Community Needs Assessments
Housing Studies
Economic Development Strategies
Economic and Tax Impact Studies

Survey Research
Industry Studies
Workforce Studies
Education Studies
Policy Analysis
Site Selection Research
Arts & Culture Studies

Economic and Demographic Profiles
Grant and Program Evaluation Support
Research Validation and Peer Review
Tourism Strategic Plans
Comprehensive Plans
Asset Maps

Who We Are

The Institute is dedicated to empowering business and community leaders with researched-driven strategies for informed decision-making.

We conduct community-based, empirical research to identify the opportunities and challenges unique to our region, and offer innovative solutions for the problems facing our communities. **This research is funded by generous academic partners and sponsors who share our vision for a strong regional economy and vibrant communities.**

Community-Based Research

Access the latest regional research on the Institute's website. www.institutepa.org

Regional Indicators Data & Research

Indicators data tracks the region's progress over time. They include economy, healthcare, environment, education and infrastructure measures.
<https://institutepa.org/perch/resources/indicators18.pdf>

Task Force Research

Recent and archived research studies identify and address the region's challenges. This research is a driving force behind many important economic development and community revitalization initiatives, which produce positive outcomes for our area.
<https://institutepa.org/indicators.php>

Quarterly Economic Tracker

This quarterly electronic publication explores the region's economic and business trends.
<https://institutepa.org/economy-tracker.php>

Polling Program

Better understand the subject matter interests, public policy views, and civic engagement of our local college students and future leaders.
<https://institutepa.org/polling-program.php>

Thanks to our 2021 Research Underwriters!

Sincere thanks to our generous stakeholders who share our vision for a strong regional economy and healthy communities. Your support makes our work possible!

Signature Underwriters

Andrew J. Sordoni Foundation
Luzerne County
PPL Electric Utilities
Sordoni Family Foundation

Contributing Underwriters

Borton-Lawson
Geisinger Health System
WVIA

Supporting Underwriters

Berkshire Asset Management
BlackOut Design
FNCB
Greater Hazleton CANDO
Highmark Blue Cross Blue Shield
M&T Bank
McCarthy Tire
Navient
PNC
Prudential
The Luzerne Foundation
The Wright Center for Community Health
UGI Utilities

Academic Partners

Geisinger Commonwealth School of Medicine
Johnson College
Keystone College
King's College
Lackawanna College
Luzerne County Community College
Marywood University
Misericordia University
Penn State Scranton
Penn State Wilkes-Barre
The Wright Center for Graduate Medical Education
University of Scranton
Wilkes University

Locations in:
Scranton and Wilkes-Barre, PA
www.institutepa.org
570.408.9850

Staff

Teri Ooms – Executive Director
ooms@institutepa.org

Andrew Chew – Senior Research & Policy Analyst
chew@institutepa.org

Megan Stachowiak—Research Analyst
stachowiak@institutepa.org

Sarah Bender – Research Assistant
bender@institutepa.org

Kara McGrane – Research Assistant
mcgrane@institutepa.org

Jill Avery-Stoss—Research, Data & Intern Coordinator
averystoss@institutepa.org

Follow us on Twitter, Facebook & LinkedIn



Advisory Board

Chairman - Gregory Cant, Ph.D., Wilkes University

Vice-Chairman – Frank Joanlanne, Borton Lawson

Heather Acker — Gentex Corporation
Ron Beer , MHA, FACHE – Geisinger Health System
Don Brominski — UGI Utilities
Tracy L. Brundage, Ph.D. — Keystone College
Terry Casey — Chancellor Financial Group
Cornelio Catena — Commonwealth Health System
John Cefaly — Cushman & Wakefield
Robert Durkin — Greater Scranton Chamber of Commerce
Dale Jones, Ph.D. — Penn State University Wilkes-Barre
Charles Kasko— Classic Properties
Thomas Leary — Luzerne County Community College
Katie Leonard, Ed.D.—Johnson College
Joe Lettiere — CAN DO, Inc.
Robert Luciani — Prudential
Rev. John G. Marina, S.J. — University of Scranton
Carla McCabe — WVIA
Jill Murray, Ph.D — Lackawanna College
Kathleen Owens, Ph.D.—Misericordia University
Mary Persico, IHM, Ed.D. — Marywood University
Alana Roberts — PPL Utilities
Eugene Roth — Rosenn, Jenkins, & Greenwald, LLP
John J. Ryan, C.S.C., Ph.D. — King’s College
Steven Scheinman, MD — Geisinger Commonwealth School of Medicine
Bill Sordoni — Sordoni Construction
Matthew Sordoni — Sordoni Construction
Linda Thomas-Hemak, M.D. – The Wright Center
Marleen Troy, Ph.D., — Wilkes University
Wico van Genderen — Greater Wilkes-Barre Chamber of Business & Industry
Lucyann Vierling — Wayne Pike Workforce Alliance
Marwan Wafa, Ph.D. — Penn State University Scranton
Tara Mugford Wilson,— Power Engineering Corporation

Join our growing list of research underwriters !

To learn more, contact Teri at ooms@institutepa.org.